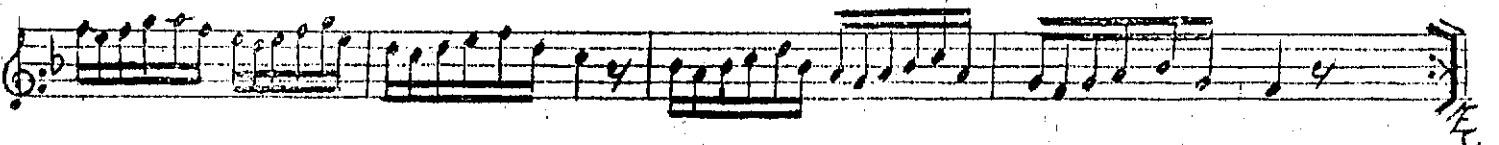
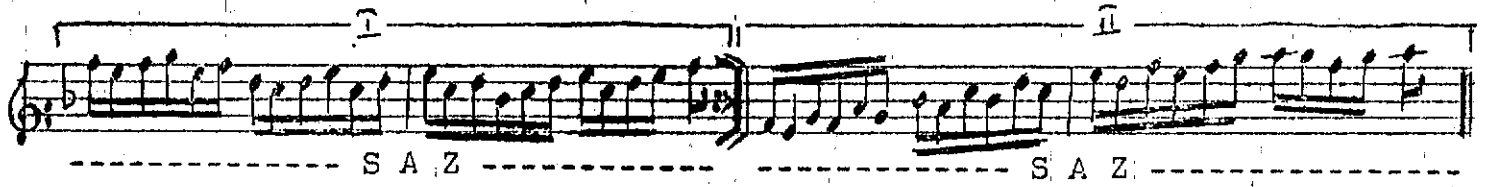
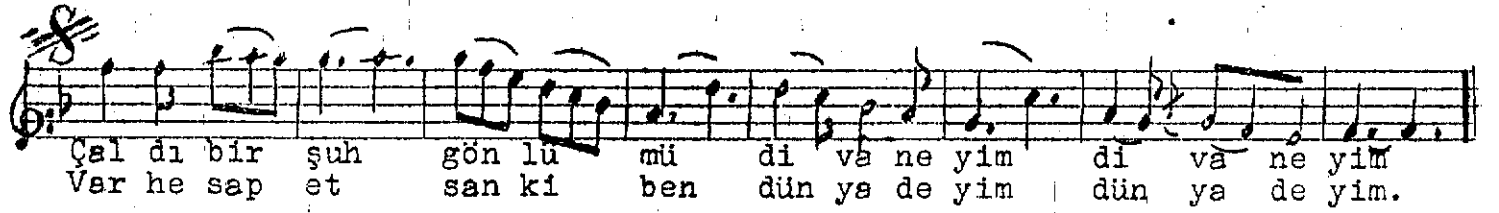


A C E M A Ş İ R A N

U. SEMAİ

Sorma dostum halimi âvâreyim

NURİ HALİL POYRAZ



Sorma dostum halimi âvareyim,  
Çaldı bir şuh gönlümü divâneyim,  
Fehm-ü idrâk etmez oldum âlemi,  
Var hesap et sanki ben dünyadayım.